

12.221 Field Geophysics

Instructors

Tom Herring, tah@mit.edu;

Brad Hager brad@chandler.mit.edu

Web: <http://www-gpsg.mit.edu/~tah/12.221>

01/05/04

12.221 IAP Class 4

1

Activities Today

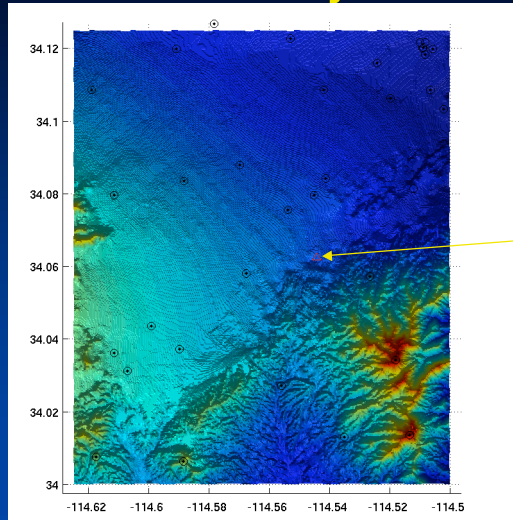
- Plan in more detail, measurements to be made a camp
- Introduction to geologic problems by Prof. Burchfiel
- Examine some maps of the of the region.

01/05/04

12.221 IAP Class 4

2

Gravity measurements



Black circles are gravity points

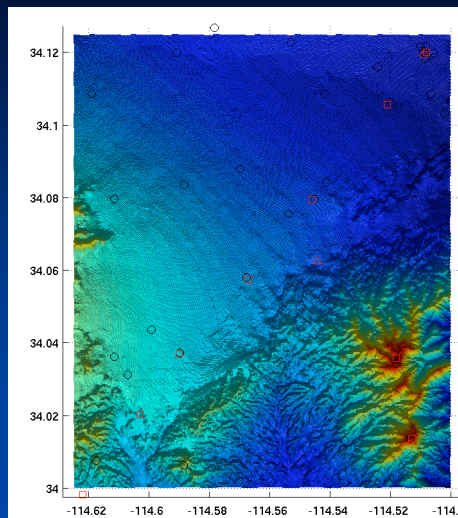
Field Camp

01/05/04

12.221 IAP Class 4

3

Gravity + Geodetic marks



Red squares are geodetic marks

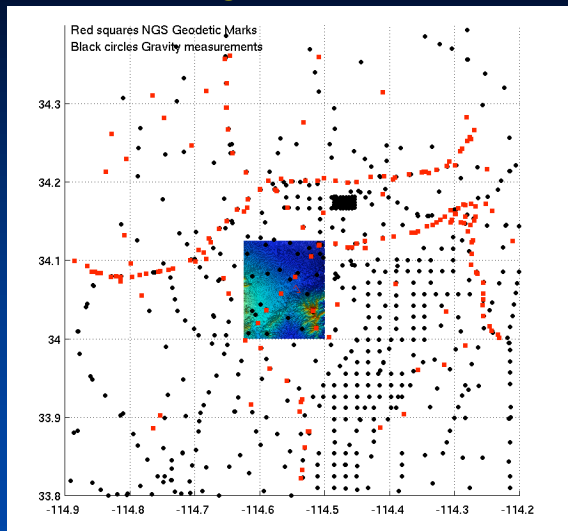
Small offset from gravity points is probably due to NAD27-NAD83 differences

01/05/04

12.221 IAP Class 4

4

Regional Gravity + Geodetic



Red are geodetic marks of varying accuracy

Black are gravity measurements

01/05/04

12.221 IAP Class 4

5

Activities

- Based on the questions we want to answer at field camp, use the web and matlab to plan out our activities.

01/05/04

12.221 IAP Class 4

6